


WebSmart[®] PHP
Rapid PHP Development for IBM i and Other Platforms



BCD ZendCon Marcel Sarasin
Product Manager
BCD Software

BCD **About BCD**

- 35 Years
- 40 Awards
- IBM and Zend Partner

Agenda

- What is WebSmart PHP
- Demo
- Key Features
- Tech Support

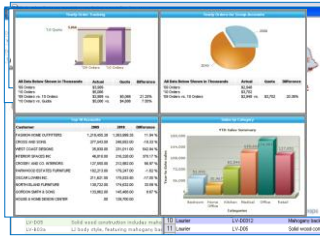
WebSmart PHP

Rapid PHP Web Application Development



Modern Web Technologies

- Web Services
- jQuery & AJAX
- Maps
- Spreadsheets
- SmartCharts



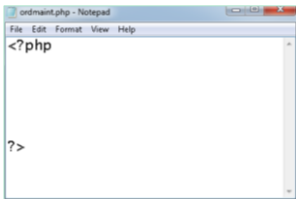
Mobile Web Apps



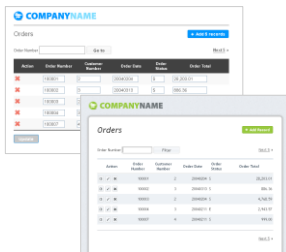
Multi-Platform



PHP Editors



PHP Apps in 5 Minutes



- Templates
- PHP
- HTML
- CSS
- JavaScript
- Stateless

Agenda

- What is WebSmart PHP
- ➔ ■ **Demo**
- Key Features
- Tech Support

BCD

Requirements *(if hosting on IBM i)*

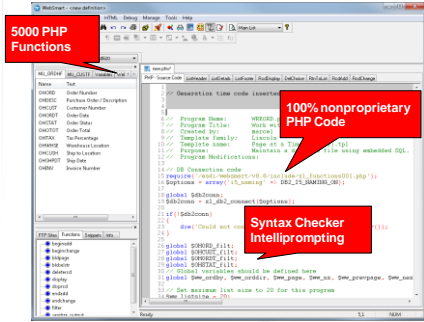
- V5R4
- Zend Server
- APACHE

Agenda

- What is WebSmart PHP
- Demo
- ➔ ■ **Key Features**
- Tech Support

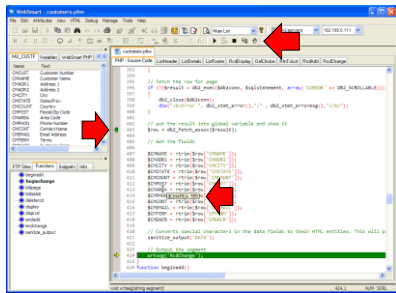
BCD

PHP



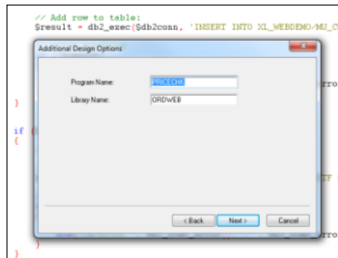
BCD

Debugger



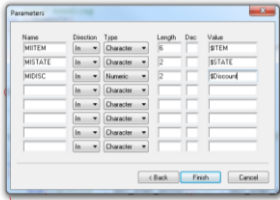
BCD

Leverage RPG Code



Leverage RPG Code

```
// Add row to table
Srsst1 = db2_exec($db2conn, 'INSERT INTO XI_MERDEMO_M1_CUST
```



Name	Description	Type	Length	Dec	Value
WRTM	In	Character	8		01104
WRTSTA	In	Character	3		01101
WRTDC	In	Number	2		010000
	In	Character			
	In	Character			
	In	Character			
	In	Character			

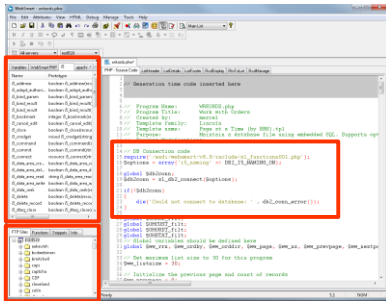


Leverage RPG Code

```
PHP - Source Code | ListData | ListForm | RollData | RollChoice | RollList | RollRange
401
402 die('!S_program_prepare');
403
404 ***** Step 3: assign the parameter values to send *****
405 /* Create an array with the input names and the */
406 /* corresponding values. You need to supply the */
407 /* actual parm values. */
408 $in_parameters = array(
409     'WRTM' => '01104',
410     'WRTSTA' => '01101',
411     'WRTDC' => '010000'
412 );
413
414
415 ***** Step 4: the parameters that will be returned *****
416 /* Create an array with the output parameters */
417 /* returned by the program. */
418 $out_parameters = array(
419 );
420
421
422 ***** Step 5: Call the program. *****
423 $ret = $S_program_call($pgm, $in_parameters, $out_parameters);
424
425 // Check if any errors occurred.
426 if (!$ret)
427 {
428     die('!S_program_call');
429 }
430
431 // Close the program handle (unload from memory).
432 $S_program_close($pgm);
433
```



IBM i Integration



```
PHP - Source Code | ListData | ListForm | RollData | RollChoice | RollList | RollRange
***** Step 3: assign the parameter values to send *****
/* Create an array with the input names and the */
/* corresponding values. You need to supply the */
/* actual parm values. */
$in_parameters = array(
    'WRTM' => '01104',
    'WRTSTA' => '01101',
    'WRTDC' => '010000'
);

***** Step 4: the parameters that will be returned *****
/* Create an array with the output parameters */
/* returned by the program. */
$out_parameters = array(
);

***** Step 5: Call the program. *****
$ret = $S_program_call($pgm, $in_parameters, $out_parameters);

// Check if any errors occurred.
if (!$ret)
{
    die('!S_program_call');
}

// Close the program handle (unload from memory).
$S_program_close($pgm);
```



PRIVATE II: INSIDE SOLUTIONS

WebSmart PHP Modernizes Skechers Order Fulfillment

Private II: Inside Solutions is a proprietary WebSmart PHP solution designed to drive the customer experience through the use of their products. System (SOP) services are provided from the vendor, and the vendor retains the system from System (SOP). Services are offered for continuity and clarity.

Private II: Inside Solutions is a proprietary WebSmart PHP solution designed to drive the customer experience through the use of their products. System (SOP) services are provided from the vendor, and the vendor retains the system from System (SOP). Services are offered for continuity and clarity.

Private II: Inside Solutions is a proprietary WebSmart PHP solution designed to drive the customer experience through the use of their products. System (SOP) services are provided from the vendor, and the vendor retains the system from System (SOP). Services are offered for continuity and clarity.

Tell us about Skechers.
Skechers USA, Inc. is a leading footwear brand serving global markets in the United States and performance footwear solutions. The company designs, develops, and markets lifestyle footwear that appeals to men, women and children. Headquarters in Manhattan Beach, Calif. (SKE) (NYSE) is ranked in the New York Stock Exchange under the stock tick and is a public company in over 100 countries and territories.

Tell us about WebSmart PHP and how it's used by Skechers.
Private II: Inside Solutions services use WebSmart PHP, the rapid (SOP) and multi-platform web application development tool to design, build, launch, and manage web applications. The Skechers Order Fulfillment and Quality Assurance system, WebSmart PHP services are designed to help to drive the design PHP web application to launch.



Agenda

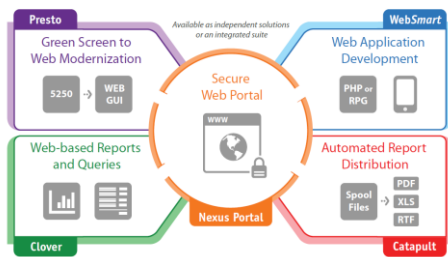
- What is WebSmart PHP
- Demo
- Key Features
- ➔ ■ Tech Support

95% Tech Support Satisfaction Rating
455 Surveys Completed

Tech Support

- Unlimited
- Phone, Email, Online
- Documentation
- Training
- Professional Services

Modernization Suite





The fastest way to develop PHP applications



- ◇ Templates create PHP and HTML
- ◇ IBM i and Multi-platform
- ◇ DB2, MySQL and Oracle
- ◇ Wizard to Call RPG Programs
- ◇ Unlimited Phone Support

Learn More and Download a Free Trial
Visit: www.bcdsoftware.com/wspdp
